



# Multi-Channel Datalogger

## Model: DSCAN 10M

### Features

- 8 Thermocouple(J,K,T,E,N,B,C) / 4-20mA Channels / RTD / 0-5V
- RS232 / RS 485 compatible PC Interface
- Windows 98/2000 compatible data logging software
- Selectable Reports / Graphs for all channels
- 4-20mA Channels programmable for any parameter from the PC
- Accurate to within 1 °C over the entire working range
- 0.1 °C resolution on Temperature channels
- 64K Memory for stand-alone datalogging



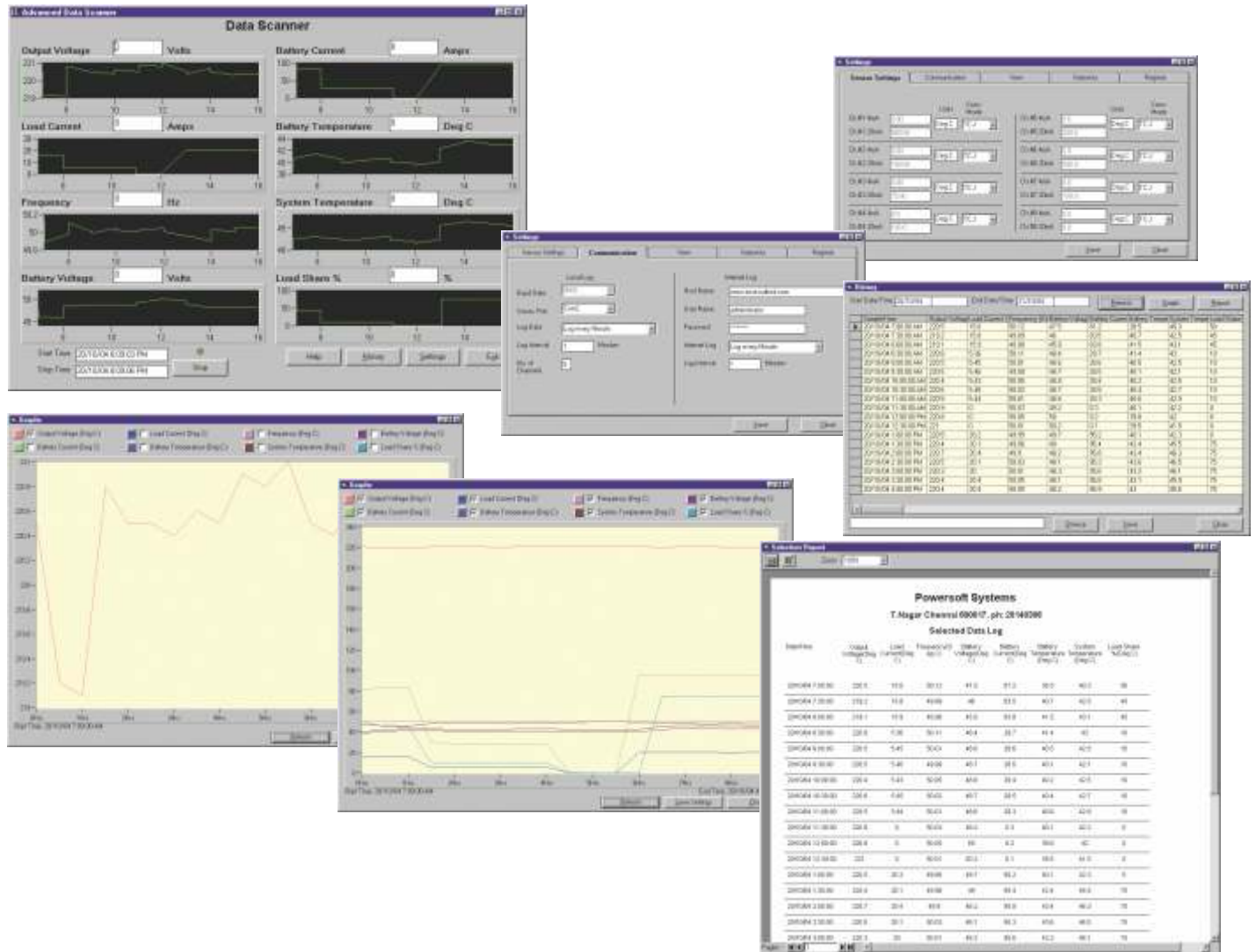
### Specifications

Power supply	: 220 VAC $\pm$ 10 %, 24 VDC
Power	: 2 Watt maximum
Indication	: 2 Line 16 character LCD display
No of Channels	: 8
Signal Type	: Thermocouple J,K,T,E,N,B,C Or 4-20mA Or 0-5V (Factory settable only)
Measuring Range	: J: -210 to 1200 °C
Signal Maximum	: Protected for 40mA continuous (4-20mA models) 20V DC (other models)
Conversion Type	: Polynomial Extraction (For temperature measurements)
Operating Temperature	: 0-50 °C
Storage Temperature	: 0-60 °C
Humidity	: 0-85% non condensing
Accuracy	: $\pm$ 1 °C
Program Variables	: Transmitted via Serial port for recording using PC
Programming Method	: From keypad provided in the instrument / RS232 interface
Housing	: Panel mount

These Data Loggers process and send 8 channels of sensor information to the PC. These values are stored in the computer at programmable intervals. Thermocouples J, K, T, E, N, B, C can be connected to the inputs. In addition channels can be factory set for 4-20mA inputs. Thermocouple inputs are amplified using very low error amplifiers. Cold junction compensation is provided on-board for maximum accuracy. The thermocouple readings are software linearized using polynomial extraction for high accuracy. The readings are accurate and repeatable. Since the inputs are linearized over the entire working range including temperature below zero, thermocouples can be used for measuring temperature below zero.

Software stores values in industry standard database. This database is available for all windows users. Users can retrieve data from this ODBC standard database and incorporate it to their designs. The software comes builtin with selectable reports as well as graphs. Graphs can be plotted for a combination of selected channels

The Datascan 10 comes standard with an easy to use, user-friendly software that requires minimal computer knowledge. The operation is intuitive and most functions are self explanatory.



**Minimum System Requirements for all the above systems**

IBM PC compatible running Win 9X/2000/XP, Available 9-pin serial port, 5Mb Hard Disk Space, 32Mb RAM



12, Pillayar Koil St., Vijayshanthi Bldgs. T. Nagar, Chennai - 600 017  
 Phone: (44) 2814 0386, Mobile: 94440 34160  
 Email: powersoft\_systems@yahoo.com  
 Visit us on the Web: www.powersoftsystems.com

Authorised Dealer: