



3 \emptyset Energy Datalogger

The 3 Phase Multi-functional Digital Power and Energy Meter measures the following energy related parameters in 3 phase AC lines.

- ✓ True RMS voltage
- ✓ True RMS Current
- ✓ Line Frequency
- ✓ Power Factor
- ✓ Active Power
- ✓ Apparent Power
- ✓ Active Energy



Features

- ✓ Three phase multi-functional energy parameters
- ✓ Clamp type CT capable of measuring 30A to 400A
- ✓ Program optional external CT ratio and PT ratio.
- ✓ USB interface to PC
- ✓ PC Software for data logging, trends, graphs and reports.

Measurement Method

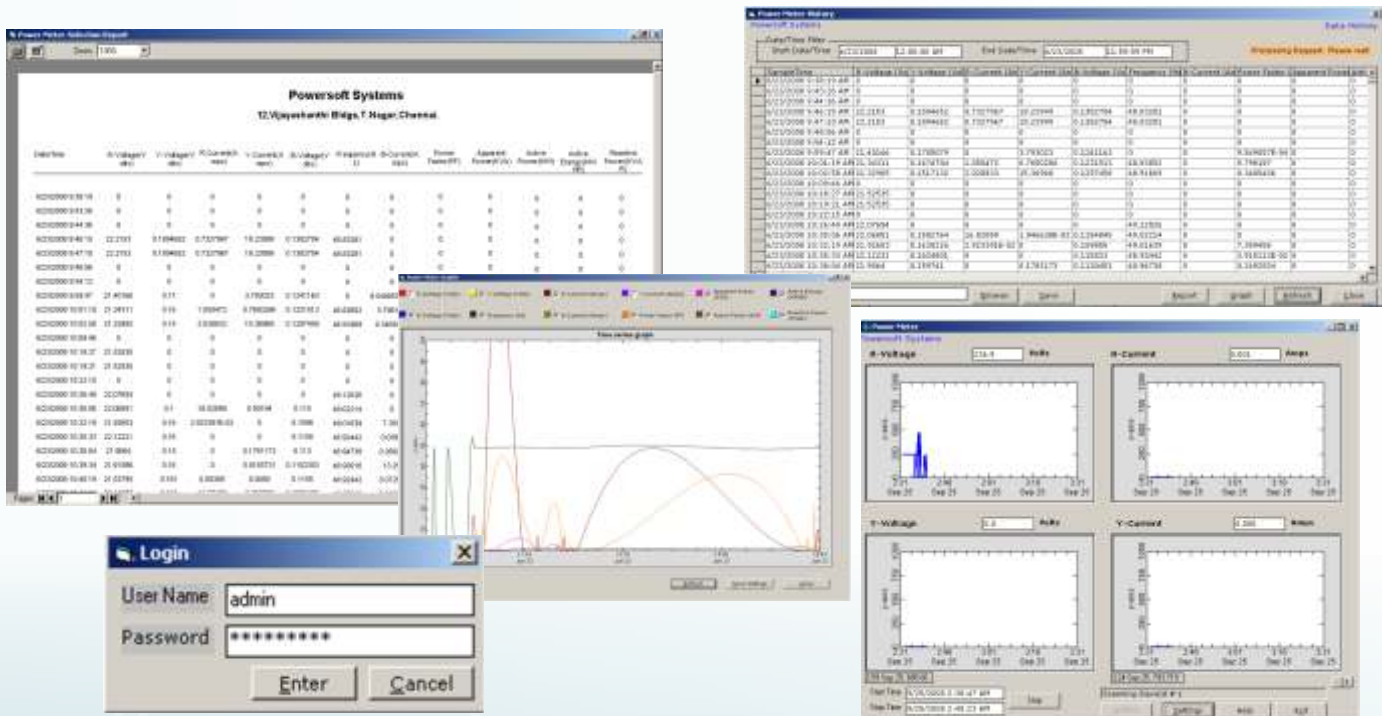
- ✓ Voltage is measured using internal potential dividers
- ✓ Current is measured using current transformer.
- ✓ Power / Energy measurement using sigma delta ADCs and a digital integrator
- ✓ Measurement method conforms to IEC 687 / 61036

General Specifications

Application	: Three phase Power / Energy, Energy Measurement
Operating Temperature	: 0°C to 50°C
Parameters	: True RMS Voltage, Current, Power, Energy
Storage Temperature	: 0 °C to 70 °C
Relative Humidity	: 95%
Accuracy	: Class 1
Display	: 2-line 16 Character Backlit LCD
Standards	: Conforms IEC 687 / 61036
User Recalibration Capability	: Yes

Electrical Specifications

Input Voltage	: 170 to 250 VAC
Voltage Range for Measurement	: 10 to 450V (without external PT)
Current Range for Measurement	: 0 to 300A
Power Range for Measurement	: Programmable
Memory	: Energy in kW-hrs (Non-resettable and resettable Energy readings)
Input Method	: Voltage divider/ Current Transformer provided
Nominal frequency	: 50Hz
Power Factor Range	: 0.1 lag Unity 0.1 lead
Energy measurement bandwidth	: 14kHz
Parameters displayed	: Voltage, Current, PF, Frequency, Active Power, Apparent Power, Energy
Serial Interface (Select Models Only)	: RS232



POWERSOFT SYSTEMS

12, Pillayar Koil St., Vijayshanthi Bldgs. T. Nagar, Chennai - 600 017
 Phone: (44) 2814 0386, Mobile: 94440 34160
 Email: powersoft_systems@yahoo.com
 Visit us on the Web: www.powersoftsystems.com

Authorised Dealer: